

INVESTMENTS ▶



PUBLIC-PRIVATE PARTNERSHIP ▶

CONSTRUCTION ▶



RUSSIAN
INFRASTRUCTURE
HOLDING



CONCESSIONS ▶

OPERATION ▶



INFRASTRUCTURE ▶

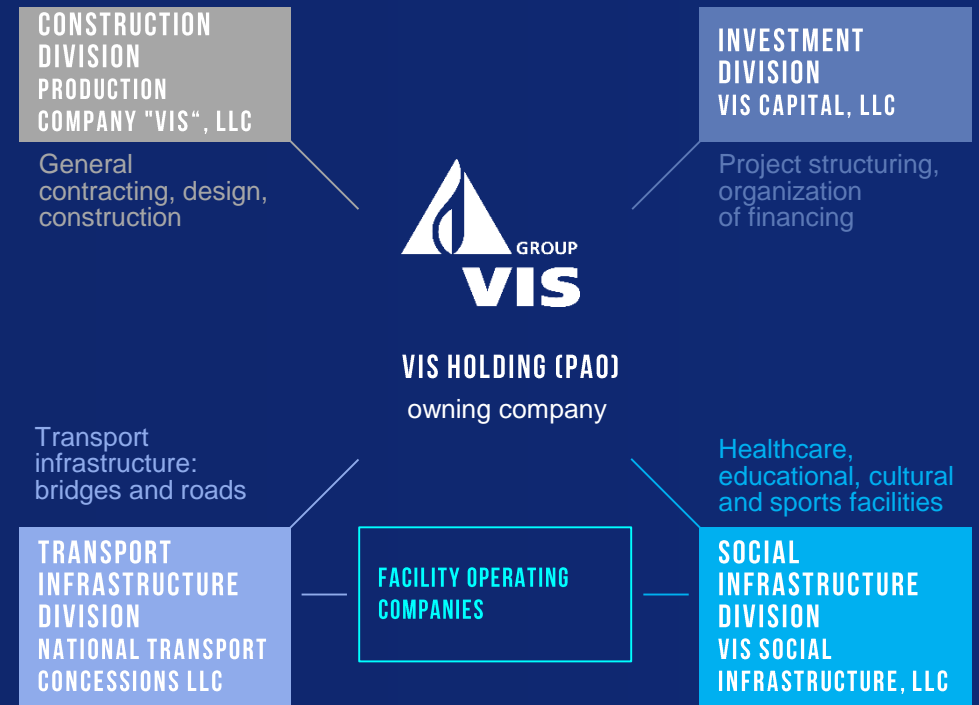


RUSSIAN INFRASTRUCTURE HOLDING

INCLUDED IN THE LIST OF STRATEGIC RUSSIAN COMPANIES

- ▶ Investments in infrastructure
- ▶ Project management over the entire life cycle
- ▶ Attracting extrabudgetary financing
- ▶ Design, construction and operation

CORPORATE STRUCTURE



MISSION ▶

Implementation of infrastructure projects for Russia's economic and social development, improving people's quality of life

25 YEARS

**OF OPERATIONAL
ACTIVITY**

100+

FACILITIES BUILT

5 facilities under construction

1 facility designed

12 facilities under construction

2 facilities under construction

8 completed facilities

4 completed facilities

52 completed facilities

14 completed facilities



16 %



VIS Group's PPP market share in target segments

AA-.ru



Rating assigned in 2025

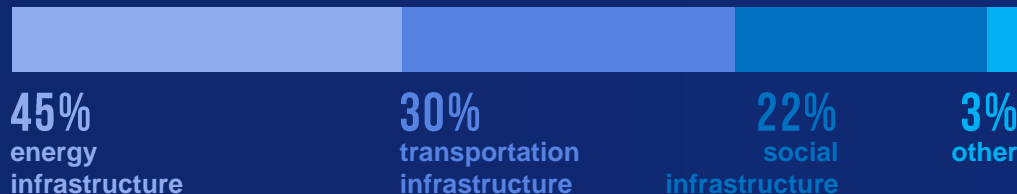
ruA+



Rating assigned in 2021
Confirmed in 2022-2025

IMPLEMENTED PROJECTS

₽382 billion



CURRENT PROJECT PORTFOLIO — ₽845 BILLION



▶▶▶ 94% — PPP PROJECTS AND CONCESSIONS

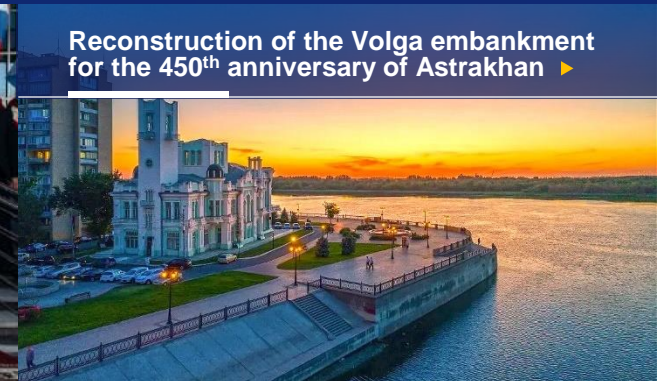
Reconstruction of the Orenburg helium plant



Construction of infrastructure for Winter Olympics – 2014



Reconstruction of the Volga embankment for the 450th anniversary of Astrakhan



Modernization of the Kirishi power station



Construction of a transport hub in Novy Urengoy



Construction of the 9th power block of the Novocherkassk power station



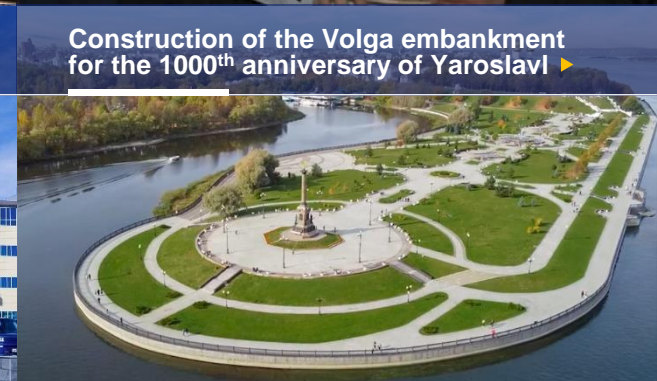
Construction of a waterway terminal in Salekhard



Construction of a universal sports center in Novy Urengoy



Construction of the Volga embankment for the 1000th anniversary of Yaroslavl



Khabarovsk Bypass ▶



Cultural and contemporary art center in Yakutsk ▶



International Arctic school ▶



Outpatient clinics in Novosibirsk ▶



Mytishchi Chord Expressway ▶



Tundrov microdistrict in Novy Urengoy ▶



Art school in Gubkinsky ▶



National school in Yakutsk ▶



Bridge over the River Ob in Novosibirsk ▶





1 PROJECT STRUCTURING ▶

VIS Group structures infrastructure projects at the pre-investment stage with proprietary funds using the private initiative mechanism.

2 COMMERCIAL CLOSING ▶

3 FINANCIAL CLOSING ▶

Total volume of resources attracted from financial institutions exceeds

₽284 billion

4 DESIGN AND CONSTRUCTION ▶

29 facilities
at the design and construction stage

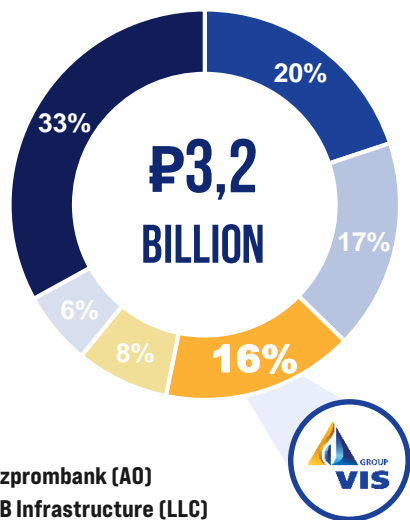
5 FACILITY OPERATION ▶

18 facilities
at the operation stage



A MULTIFACTOR ASSESSMENT IS CONDUCTED TO FORM A PROJECT PORTFOLIO WITH PREDICTABLE CASH FLOWS AND CONTROLLED RISKS

VIS Group is among the TOP-5 major players in the Russian infrastructure market in all priority areas of development, including transport and social facilities



- Gazprombank (AO)
- VTB Infrastructure (LLC)
- VIS Group
- Rusdor-Finance (LLC)
- Avtoban DSK (AO)
- Projects without participation of the TOP-5 players

Source: National PPP Center's data (part of the VEB.RF Group), analysis by TeDo. Note: excluding projects with a capital intensity of less than 4 billion rubles and the High-Speed Railway project (2024).

		FINANCIAL INSTITUTIONS	CONSTRUCTION COMPANIES
Proprietary technical expertise ▶	●	◐	●
Proprietary construction capacities ▶	●	◐	●
Control at all stages of PPP project implementation ▶	●	◑	◑
Experience in structuring PPP projects ▶	●	●	◐
Experience in operating facilities built under PPP agreements ▶	●	◐	◐
Experience in implementing technologically complex projects ▶	●	◐	◑
Experience in attracting project financing ▶	●	●	◐



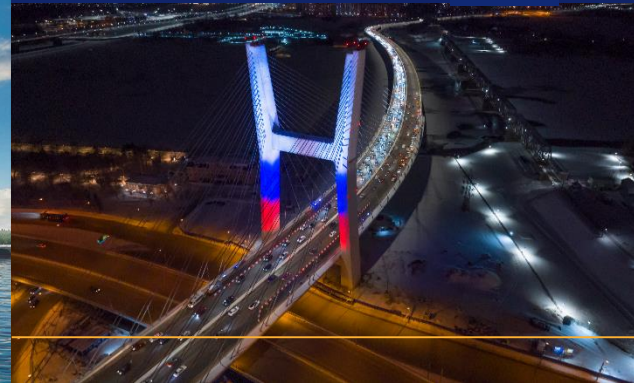
◀ **BRIDGE OVER THE RIVER LENA**

in Yakutsk

Design and construction term:
2020 – 2028

BRIDGE OVER THE KALININGRAD BAY ▶

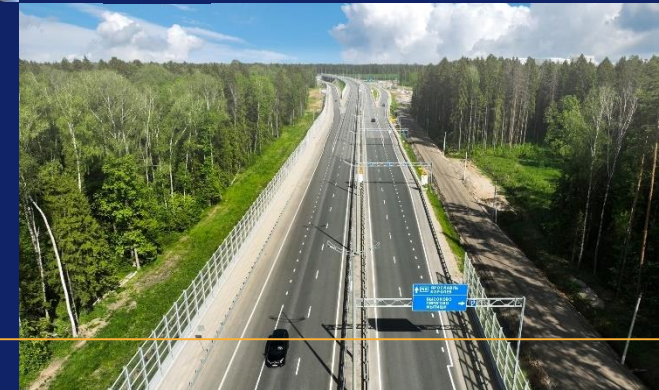
Design term:
2019 – 2024



◀ **BRIDGE OVER THE RIVER OB**

in Novosibirsk

Construction term:
2017 – 2026



KHABAROVSK BYPASS HIGHWAY ▶

Construction term:
2017 – 2022



MYTISHCHI CHORD EXPRESSWAY ▶

Design and construction term:
2018 – 2024



◀ NETWORK OF OUTPATIENT CLINICS in Novosibirsk

Design and construction
term:
2019 – 2026



◀ DISTRICT PERINATAL CENTER in Surgut

Design and construction
term:
2015 – 2021



PHILHARMONIC AND ARCTIC CENTER ▶ in Yakutsk

Design and construction
term:
2019 – 2026



12 EDUCATIONAL INSTITUTIONS ▶ in Yakutia

Design and construction
term:
2016 – 2019



◀ SMART-POLYCLINIC in Yakutsk

Design and construction
term:
2019 – 2025



◀ NETWORK OF EDUCATIONAL FACILITIES in Yamal

Design and construction
term:
2013 – 2017





VIS Group specialists have the necessary experience and competencies in using various forms of attracting project investments: from using credit resources and concluding direct tripartite agreements between the bank, public and private partners to issuing infrastructure bonds ▶

2017	2020	2020-2025	2024-2025
VIS Group was one of the first in Russia to attract bond financing within the framework of a non-concession PPP project.	VIS Group issued the first social bonds in Russia.	In 2020, 2021 and 2023-2025, ten issues of VIS Group's exchange bonds were placed on the Moscow Exchange for a total of ₺20.5 billion.	In 2024-2025, VIS Group placed the first issues of digital financial assets (DFA).
<p>ruAA ◀ Expert <small>РАТНН ОБОЕ АТНТТРО</small></p> <p>High rating of debt instrument reliability</p>	<p>ruA ◀ Expert <small>РАТНН ОБОЕ АТНТТРО</small></p> <p>High rating of debt instrument reliability</p>	<p>A(RU) ruA+</p> <p>AKPA Expert <small>РАТНН ОБОЕ АТНТТРО</small></p> <p>High rating confirmed by Russia's leading expert agencies</p>	<p>A</p> <p>DFA placed on Alfa-Bank's "A-token" platform</p>
<p>2 issues:</p> <p>October 4, 2017 December 21, 2017</p>	<p>1 issue:</p> <p>July 2, 2020</p>	<p>Bond program and prospect registered in the amount of</p>	<p>3 issues:</p> <p>February 22, 2024 June 26, 2024 March 25, 2025</p>
₺4 billion ▶	₺5.57 billion ▶	₺30 billion ▶	₺1.2 billion ▶

BRIDGE OVER THE RIVER LENA — A UNIQUE PROJECT WITHOUT PRECEDENT IN THE WORLD



◀◀ KHABAROVSK BYPASS — FIRST TRANSPORT CONCESSION IN THE RUSSIAN FAR EAST



Term of concession agreement ▶

2017-2031

TRAFFIC OPENED
IN JULY 2022

Main route span ▶

27.1 km

Total span ▶

52.8 km

5 transport junctions ▶

MYTISHCHI HIGH-SPEED CHORD – ALTERNATIVE TO MOSCOW RING ROAD



Term of concession agreement ▶

2018-2038
TRAFFIC OPENED
IN DECEMBER 2024

Total span ▶

16.1 km

6 transport junctions ▶

11 bridges and overpasses ▶



BRIDGE OVER THE OB RIVER IN NOVOSIBIRSK – BACKBONE TRANSPORT INFRASTRUCTURE IN SIBERIA

Term of concession agreement ▶

2017-2042

TRAFFIC OPENED

IN DECEMBER 2025

Total road span ▶

5.1 km

Bridge crossing span ▶

1.5 km

Cars per day ▶

70000



◀◀ NETWORK OF EDUCATIONAL FACILITIES- FIRST PPP PROJECT IN RUSSIA WITH A COMPLETED LIFE CYCLE

Term of PPP agreement ▶

2013-2017

Number of seats ▶

1540

Total building area ▶

48700 m²

6 kindergartens ▶

1 school ▶



PERINATAL CENTER IN SURGUT – THE LARGEST BEYOND THE URAL MOUNTAINS



12 EDUCATIONAL AND CULTURAL FACILITIES— LARGEST SOCIAL PROJECT IN YAKUTIA

3730

Seats ▶

5

kinder-gartens ▶

5

schools ▶

Art school and library ▶

Term of PPP agreement ▶
2015-2026



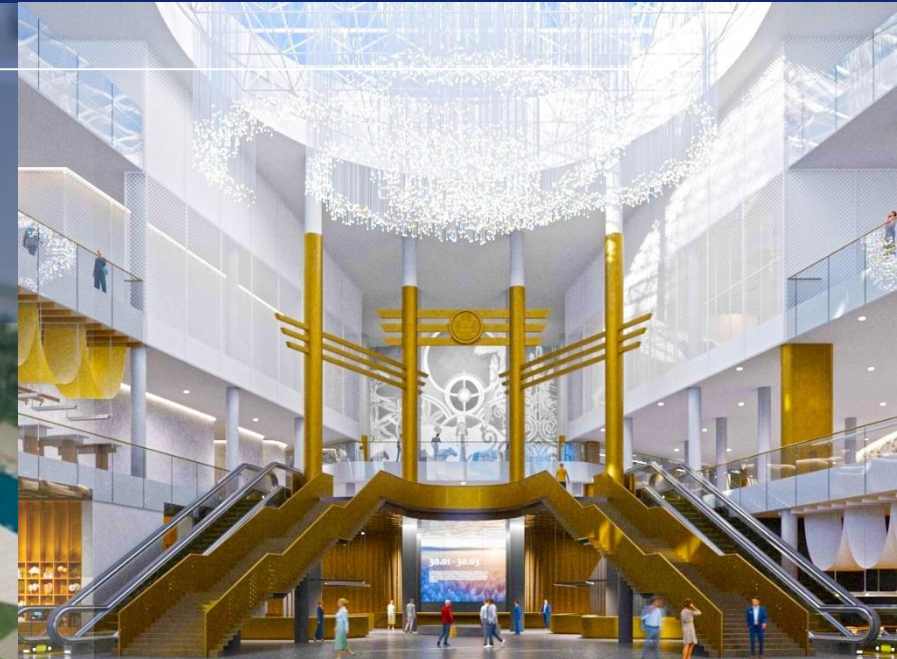
◀◀ PHILHARMONIC AND ARCTIC CENTER FOR EPIC LITERATURE – CULTURAL CLUSTER ON PERMAFROST SOIL



Term
of PPP agreement ▶
2019-2031

Total building area ▶
33 000 m²

Total seating capacity ▶
1530





Term of PPP agreement ▶
2019-2029

Area of 7 facilities ▶
88 600 m²

Visits per shift ▶
6 495



SMART-CLINIC IN YAKUTSK – THE LARGEST IN THE REPUBLIC'S CAPITAL



Term of PPP agreement ▶

2019-2030

Total building area ▶

8857 m²

600 visits per shift ▶





9600 m²

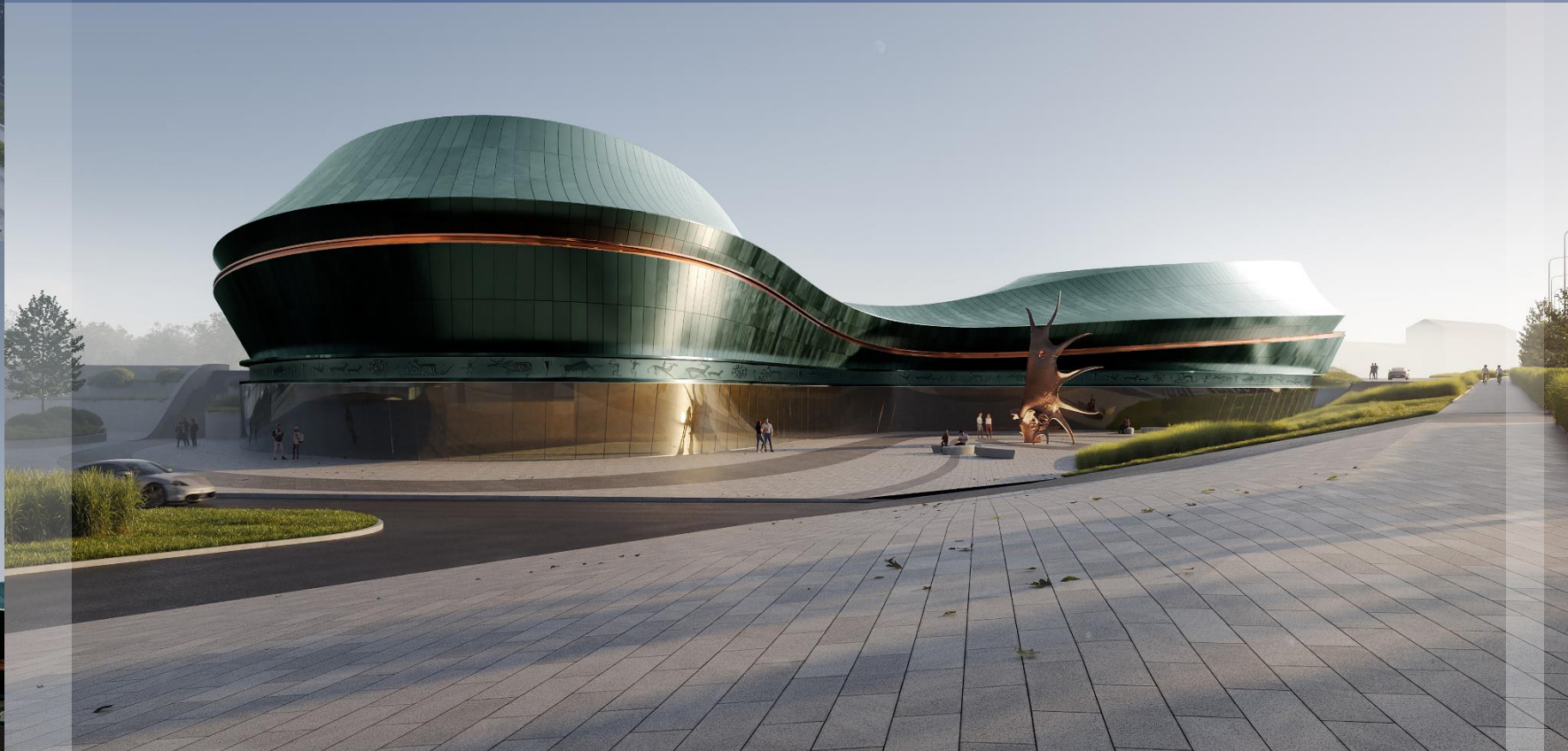
Total building area ▶

6000 m²

Exhibition area ▶

Term of concession agreement ▶

2024-2034



THE GIANT SCHOOL IN Khabarovsk is the largest in the Far East



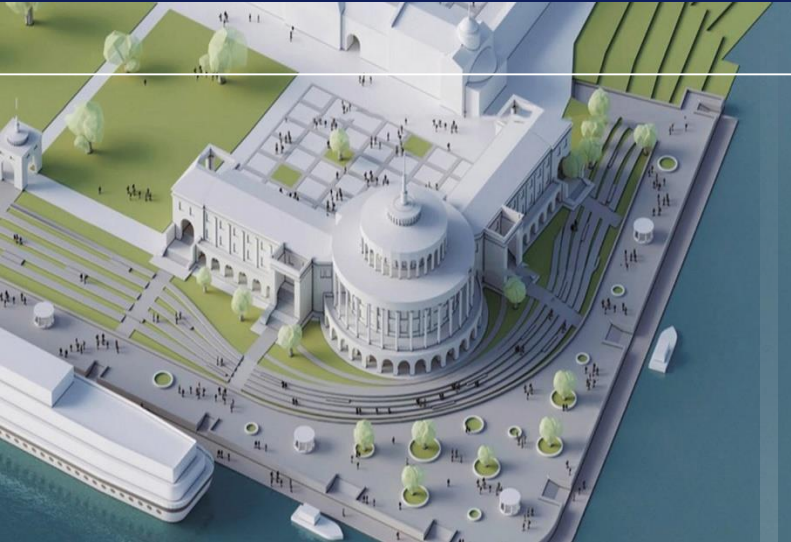
Construction term
2025-2027

Total building area
38 600 m²

Total capacity
2100 seats



◀◀ A SECOND LIFE FOR THE RIVER TERMINAL – THE RECHNOY CULTURAL AND EXHIBITION CENTER IN TVER



15574 m²

Total site area ▶

6400 m²

Building's area ▶

Design and construction term ▶

2025-2027



1,428 ^{MW}

ELECTRIC GENERATION UNITS

556.5 ^{KM}

OF GAS PIPELINES & WATER CONDUITS

3,390

SPECTATOR SEATS

IN CULTURAL CENTERS

99.3 ^{KM}

OF ROADS & BRIDGES

SEATS

8,570

IN KINDERGARTENS & SCHOOLS



RUSSIAN
INFRASTRUCTURE
HOLDING

4.78 ^{KM}

OF LANDSCAPED
EMBANKMENTS

8,245

VISITS PER SHIFT
AT MEDICAL FACILITIES

47

BRIDGES
& OVERPASSES

4,700 VISITS
PER DAY

IN SPORTS COMPLEXES

377 000 ^{M²}
OF HOUSING



RUSSIAN
INFRASTRUCTURE
HOLDING



**1/1 VASILISA KOZHINA ST.,
MOSCOW, 121096
+7 (495) 789-85-55
INFO@VIS-GROUP.RU**

VIS-GROUP.RU